

Little Sweethearts

Fabrics by
**Renée
Nanneman**



Quilt designed
by Jean Ann Wright
Quilt size: 52" x 60"



makower uk[®]

1384 Broadway · New York, NY 10018
(800) 223-5678 · www.andoverfabrics.com

Little Sweethearts

Fabrics by Renée Nanneman

Fabrics shown are 75% of actual size.
Fabrics used in featured quilt pattern are indicated in red



makower uk®

1384 Broadway
New York, NY 10018
(800) 223-5678
www.andoverfabrics.com

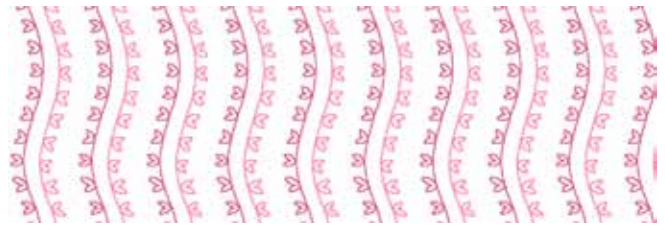
Bolts needed to cut project kits					
Pink	Orange	Red	10 kits	20 kits	30 kits
5923-E	5923-O	5923-R	1	1	1
5924-E	5924-O	5924-R	2	3	4
*5925-E	5925-O	5925-R	1	1	1
5926-E	5926-O	5926-R	1	1	2
5927-E	5927-O	5927-R	1	1	2
1867-E20	1867-O7	1867-R9	1	2	3
Backing Fabric					
5925-E	5925-O	5925-R	3	5	8
Yardage needed for backing (3½ yards per kit)					



5923-E ½ yd



5924-E 1⅞ yds



*5925-E ½ yd (extra yardage needed for backing)



5926-E ⅝ yd



5927-E ⅝ yd



1867-E20 1½ yds



5923-O



5924-O



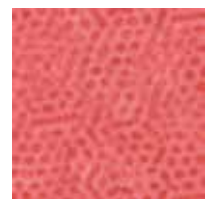
5925-O



5926-O



5927-O



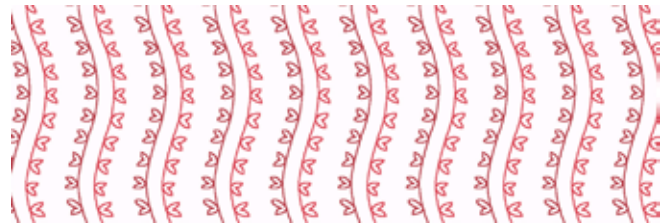
1867-O7



5923-R



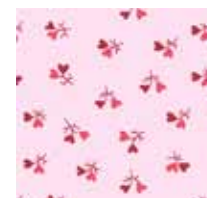
5924-R



5925-R



5926-R



5927-R



1867-R9